



AJEENKYA
TOWERS



Dr Ajeenkya D Y Patil
Chairman



**AJEENKYA
TOWERS**

WORDS FROM THE VISIONARY'S DESK

It has been our vision that every citizen should have a home. It is with this vision, we are initiating a new paradigm in housing, a rare unity of quality and affordability for the discerning. The "Ajeenkya Towers" is an upcoming and vibrant community of single owners, families, and professionals where each one will find connection and inspiration to grow and prosper.

We welcome you to your home.



HIGH ON VALUE, LOW ON BUDGET

Presenting Ajeenkya Towers, a residential and commercial project of 1 BHK compact homes designed to deliver value at a considerably less cost. Situated in Dhanori, Pune and backed by the legacy of D Y Patil, Now this is affordable housing – a dream of many made true by D Y Patil Construction.



AN ELEVATION SO STUNNING THAT MAKES THE PROJECT A LITERAL 'LANDMARK'

Elevated several stories high, Ajeenkya Towers is expected to transform the skyline of Pune and become a landmark site at Dhanori. Situated amidst the residential spaces is the commercial hotspot, a place where everyday needs can be fulfilled with no hassles. We're proud to give you comfort, convenience and luxury, all on one platter.



EDUCATION

D Y Patil Knowledge City: 1 Min
Kendriyavidyalaya (Lohegaon): 10 Mins



CONNECTIVITY

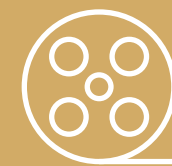
Pune Airport: 10 Mins
Shivajinagar Station: 20 Mins
Pune Station: 25 Mins

AT THE CENTRE OF THE GOOD LIFE



TRANSPORTATION

Kharadi IT Park: 20 Mins
Chakan Industrial Area: 45 Mins
Viman Nagar: 15 Mins
Kalyani Nagar: 17 Mins
Bhosari (Nashik Road): 15 Mins



ENTERTAINMENT

Smart Bazaar (Vishrantwadi): 10 Mins
Phoenix Market City: 15 Mins
Koregaon Park: 20 Mins





Artistic Impression

AN UNMATCHED LAYOUT FOR AN AWESOME LIFESTYLE

The layout of Ajeenkya Towers has been done in such a manner, that the project looks grand and majestic. Handcrafted for enhancing luxurious living at an affordable rate, every apartment here signifies innovation & ingenuity.



Artistic Impression

- Project aerial view
- Entrance gate
- Decorative wall



Artistic Impression



Artistic Impression

JAW-DROPPING VIEWS THAT'LL STUN THE EYES & MESMERIZE THE HEART

Constructed on a staggering land mass and surrounded by the lush greenery, Ajeenkya Towers has been perfectly engineered to provide its residents with the beautiful sights of the area. With a future-ready architecture, the project is set to raise the benchmarks of modern living.



Stock Image



Stock Image

PUT YOUR VENTURE INTO THE LIMELIGHT

With the commercial section designed to fulfill the everyday requirements of the residents, this project offers everything under one roof. With all the daily conveniences available at your fingertips, why go elsewhere? Now, this is what we call convenience redefined.



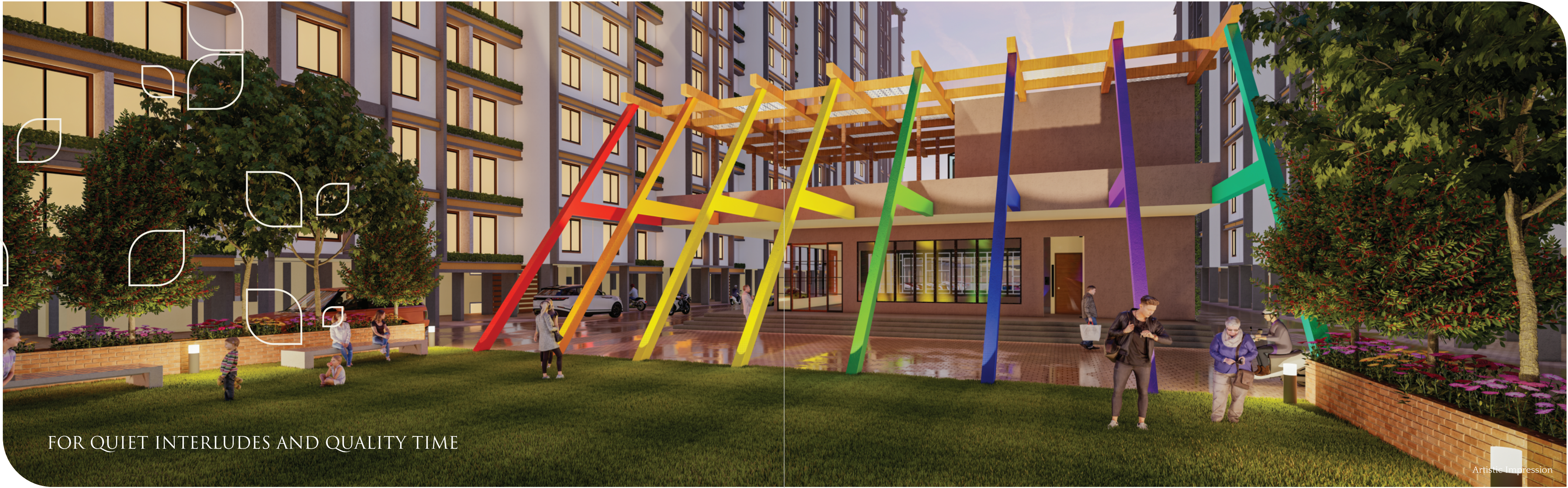
Stock Image

COMMERCIAL SPACES SUITABLE FOR

- Shops & Showroom
- Spa & Salon
- Coffee Shop & Restaurant
- Gift & Toy Store



Artistic Impression



FOR QUIET INTERLUDES AND QUALITY TIME

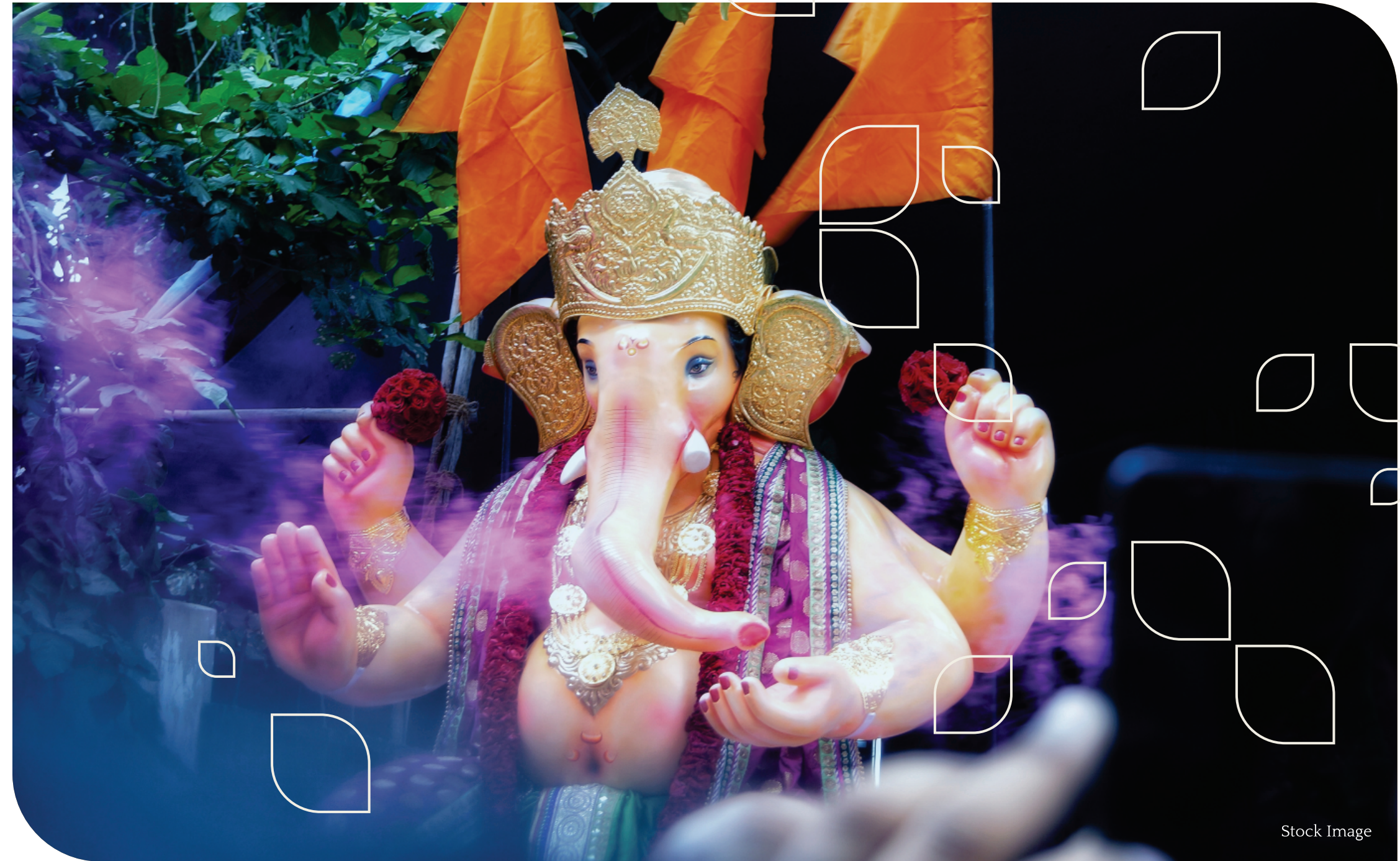
Artistic Impression



Stock Image

CELEBRATE AND REJOICE ALL THE FESTIVITIES, TOGETHER

As community living is at the heart of this project, this is one place that'll give its residents the freedom and space to get together and celebrate all the festivities. So what are you waiting for? Come here to experience the magic.



Stock Image



Stock Image

A PLETHORA OF LIFESTYLE AMENITIES TO MAKE EVERYDAY LIVING A CHILD'S PLAY

With a dedicated garden, children's play area, and a jogging track, your fitness is completely taken care of. Also, there are facilities for the children to be just kids and enjoy themselves. The locale's serenity makes it an ideal place to practice yoga and get immersed in blissful meditation. And all this is just external, the project also has provisions for indoor sports like chess & table tennis.



Stock Image



Stock Image



Stock Image

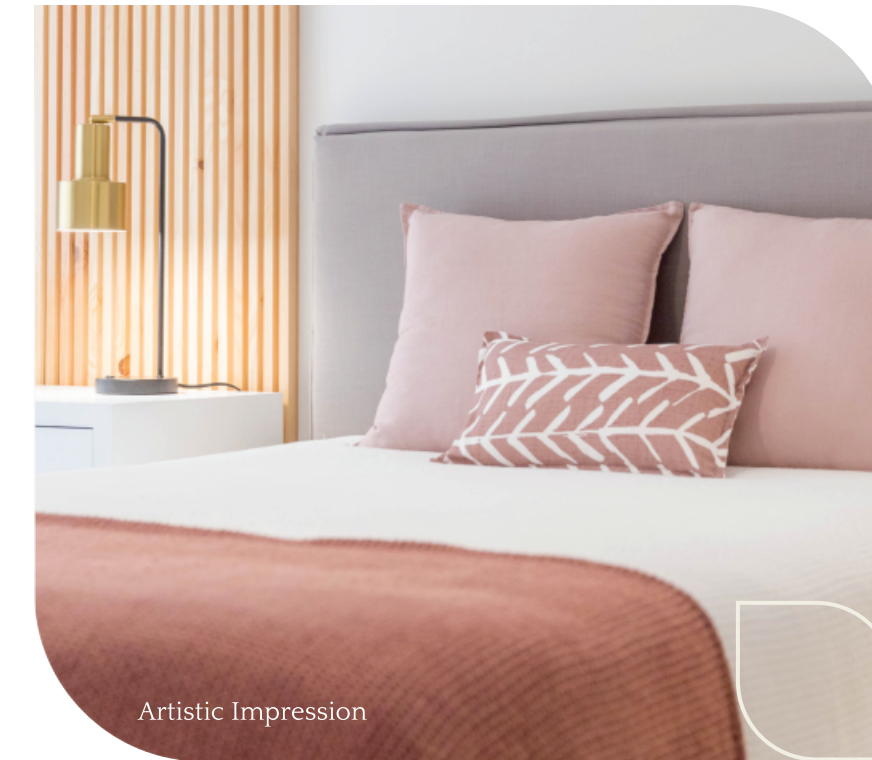
AMENITIES

- Club House
- Gym
- Yoga Hall
- Garden
- Entrance Gate With CCTV
- Senior Citizens Garden

SPACES SO BRIGHT & BREEZY,
FOR MAKING LIFE BEAUTIFUL
& MERRY



Artistic Impression



Artistic Impression

- Outer Colour: Apex Colour
- Parking: Trimix Flooring
- Steps: Tandoor Steps
- Railing: Ms Railing
- Electric Fittings: Primary Modular Switches (Anchor Or Equivalent Brand)
- Cp Fittings: Jaquar Continental Or Equivalent
- Wash Basin Type: 12"x18" Basin Hanging (Hindware/Parryware)
- Lift: ISI Standard Make Lift
- Granite At Entrance Lobby
- Colour In Parking: Oil Bound Distemper

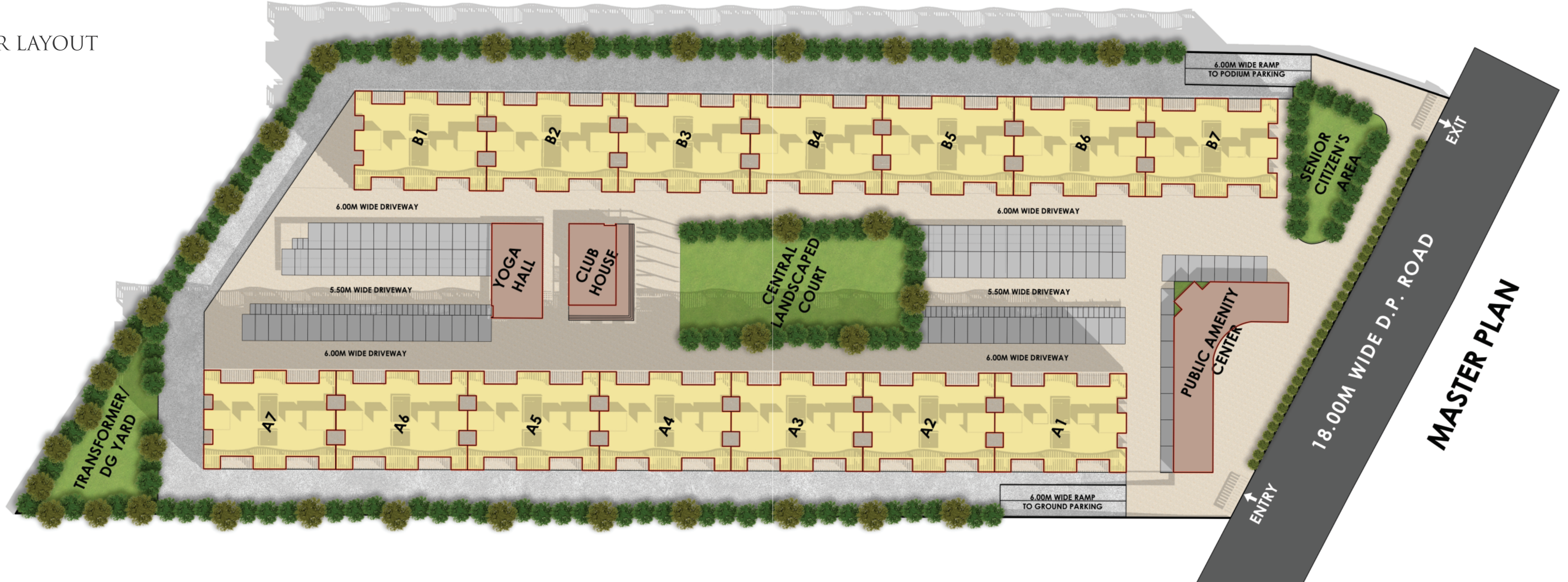
SPECIFICATIONS

- R.C.C. Framed Structure
- Brick Work: Outer 6" Thk And Inner 4" Thk AAC Block Work
- Plaster: Inner Gypsum Plaster Outer Two Coat Sponge Plaster
- Door Frames: Plywood Framed With Flush Door Laminated/BTC Frame
- Windows: Powder Coated 3 Track Aluminium Sliding With Bottom Side Granite
- Flooring: 2 X 2 Vitrified Flooring
- Bath Room: 7' Ht Wall Tiles Dado
- WC: 4' Ht Wall Tiles Dado
- Plumbing: CPVC/UPVC Plumbing As Required/ Directed By Mep Consultant.
- Electrification: Concealed Electric Work Internally And Open Patti Fitting Outside (Policab/Anchor Or Equivalent Wires)
- Colour: OBD Colour Internally



Artistic Impression

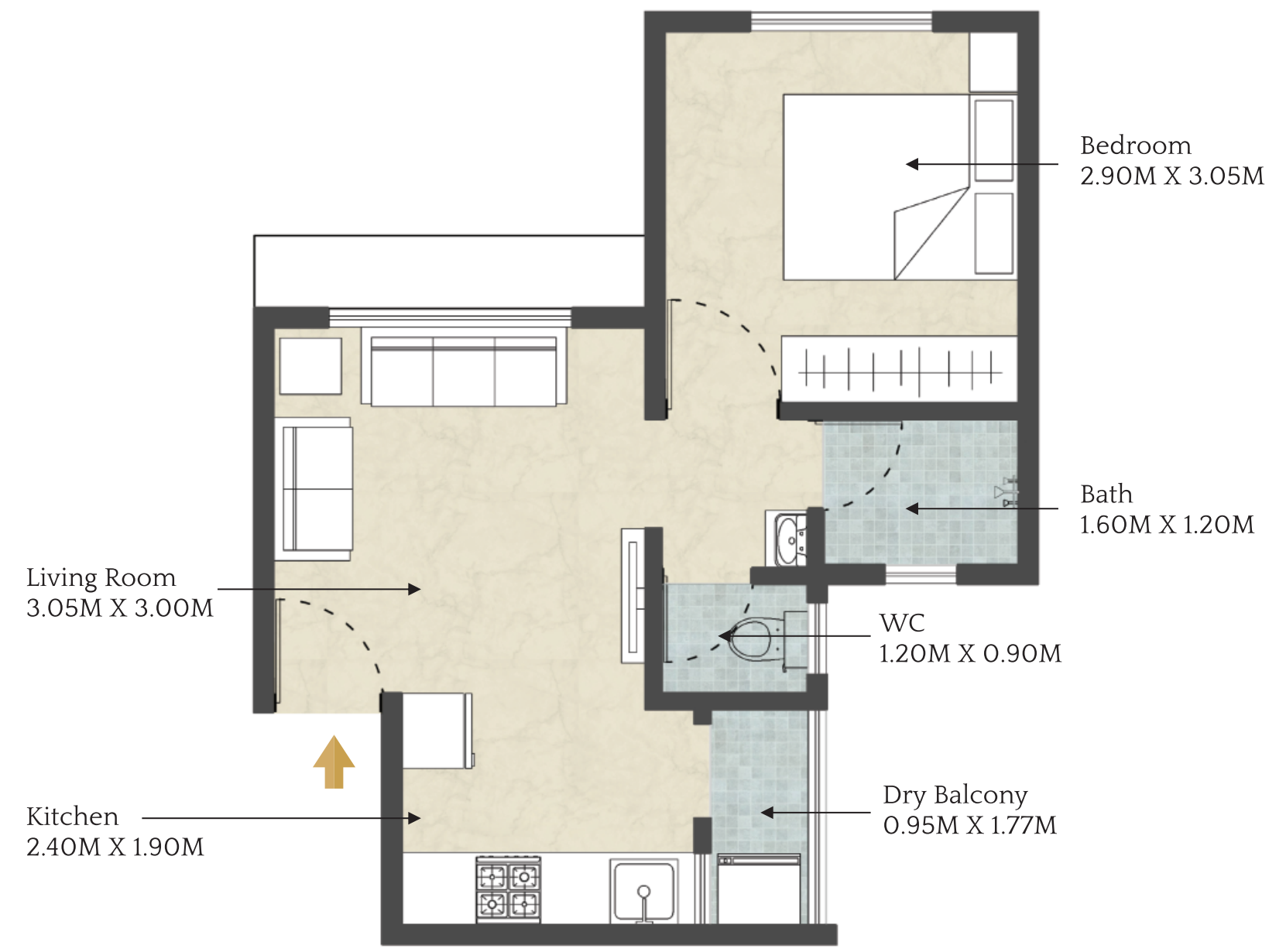
MASTER LAYOUT



MASTER PLAN



1 BHK LAYOUT
CARPET AREA 322 SQ. FT.



SITE ADDRESS

Ajeenkya Towers, Beside Ajeenkya D Y Patil University, S. No.: 137,
Pride World City Road, Charholi BK, Maharashtra: 412105.

Call: 95793 74237 | 86697 92626



MAHARERA No.
P52100049167
www.maharera.mahaonline.gov.in

NOTE : This Brochure is purely conceptual and is designed in good faith to give you a fair and overall view of the project and is not a legal offering, nor will it be part of any agreement. Photographs are not necessarily comprehensive or current. Nothing contained in this brochure will take precedence in the final agreement. Number of buildings, areas, flats/units, amenities, specifications, floors, roads, open space etc. may be revised.

Promoters reserve the right to amend layouts, plans, elevations, designs, specifications, amenities, areas etc. without notice. The use of clubhouse shall be strictly in accordance with the rules and regulations. "Future Development" may consist of high-rise buildings.